



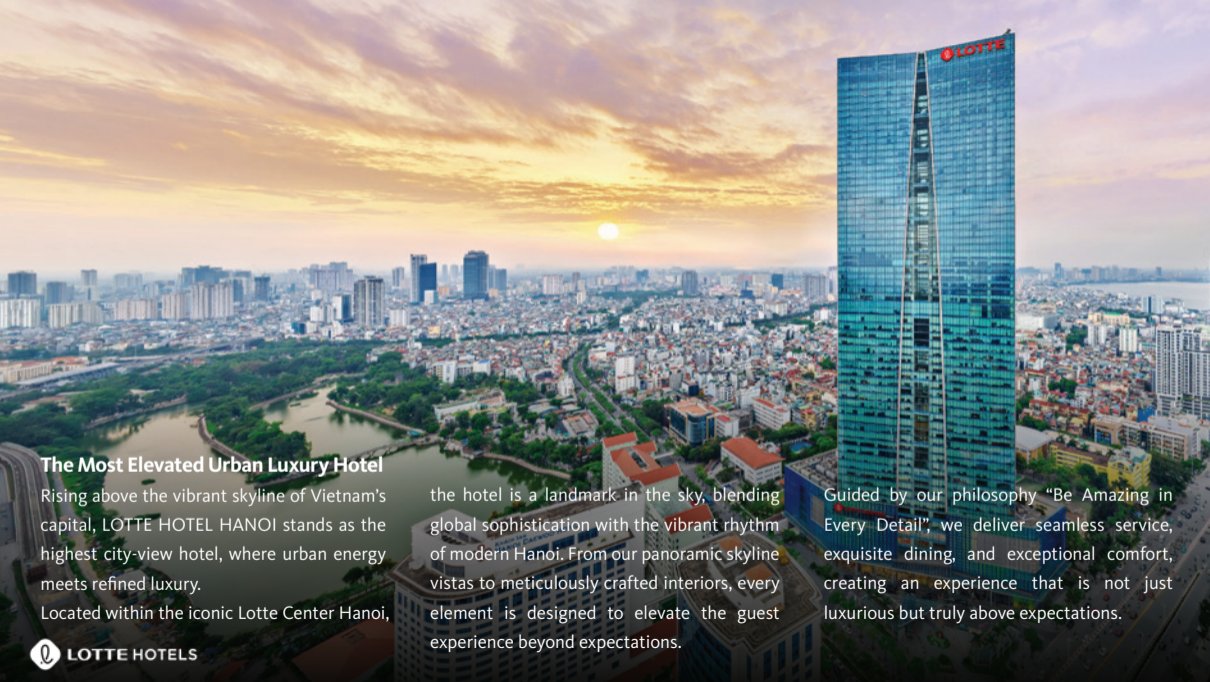
LOTTE HOTELS



# Welcome to Hanoi

Hanoi, the alluring capital of Vietnam, is renowned for its richness in culture with more than 1,000 years of history. It is also one of the country's major economic hubs that has witnessed countless historic events and welcomed millions of international visitors every year. After the sunset, this charming city is even more vibrant with the most sophisticated and glamorous nightlife activities.





## The Most Elevated Urban Luxury Hotel

Rising above the vibrant skyline of Vietnam's capital, LOTTE HOTEL HANOI stands as the highest city-view hotel, where urban energy meets refined luxury.

Located within the iconic Lotte Center Hanoi,

the hotel is a landmark in the sky, blending global sophistication with the vibrant rhythm of modern Hanoi. From our panoramic skyline vistas to meticulously crafted interiors, every element is designed to elevate the guest experience beyond expectations.

Guided by our philosophy "Be Amazing in Every Detail", we deliver seamless service, exquisite dining, and exceptional comfort, creating an experience that is not just luxurious but truly above expectations.

# LOCATIONS

- + Noi Bai International Airport  
(40 minutes by car)
- + National Convention Center  
(15 minutes by car)
- + Ho Chi Minh Mausoleum  
(10 minutes by car)
- + Temple of Literature  
10 minutes by car
- + Hoan Kiem Lake  
(15 minutes by car)
- + West Lake  
(5 minutes by car)



LOTTE CENTER HANOI  
65 stories skyscraper  
and 5 basements, with  
a height of 267 meters.



## A fabulous night of rest

LOTTE HOTEL HANOI features 318 rooms in total, with 221 standard rooms and 97 Club rooms and suites. Elegant and modern in feel, its generous proportions create a sense of calm and space. Designed by the award-winning interior architectural design firms Wilson Associates and HBA, each luxurious room offers stunning panoramic view of Hanoi and modern facilities.

Reception 38F



LOTTE HOTEL HANOI's Deluxe & Club Deluxe Rooms offer fantastic expansive bird's eye view of Hanoi. Decorated in two different styles, both equipped with the latest 4-pipe system to maintain consistent in-room temperature regardless of the season so our guests can stay in complete comfort and luxury.

Exclusive Club Floor benefits including: access to meeting room and other special benefits will surely take the edge off after a busy day in the city.

Deluxe / Club Deluxe

40-61F / 42-44 sqm / 161 King, 66 Twin & 8 Family

## Club Junior Suite

Our stylish Club Junior Suite provides extra space to unwind and the finest environment for business travelers. Dedicated service on the Club Floor are available to offer immediate assistance with meeting rooms and workstations to bring you a seamless and relaxing experience.

40-61F / 61-64sqm / 42 King, 29 Twin & 2 Family



## Deluxe Suite

Make yourself at home in one of only six Deluxe Suites at LOTTE HOTEL HANOI. For your utmost comfort and relaxation, this generously sized 99m<sup>2</sup> suite comes with an expresso coffee machine and luxurious amenities.

6 suites / 99sqm



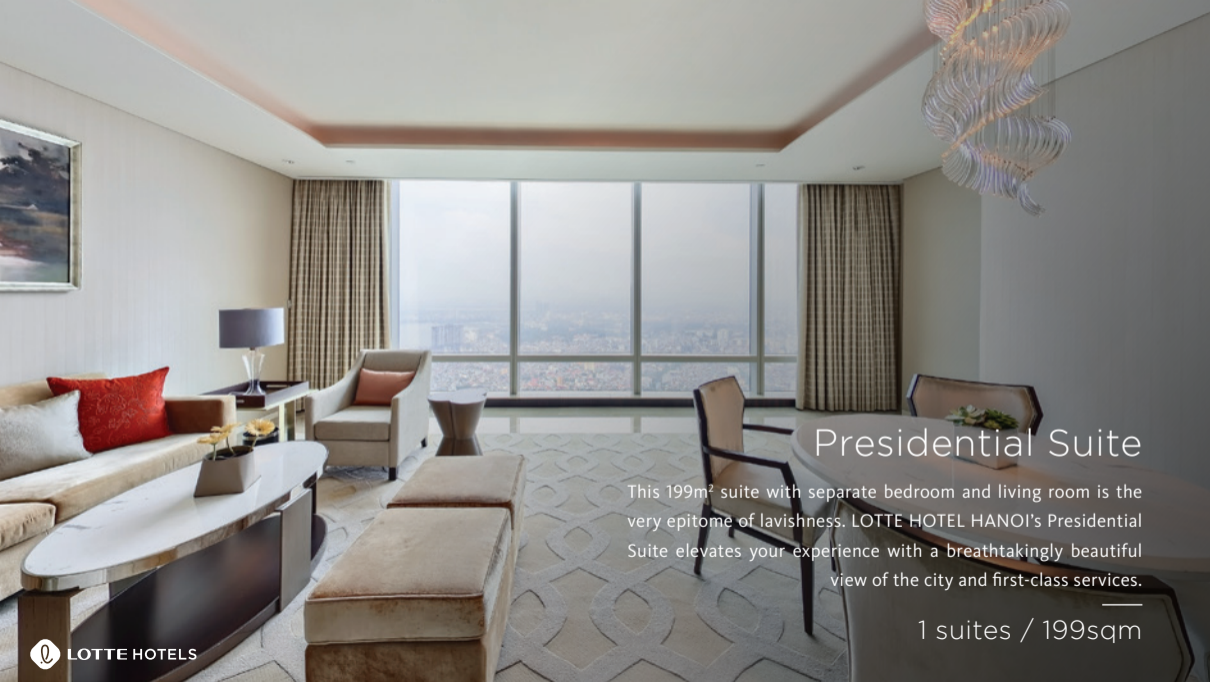
Deluxe Suite  
Living Room



## Premier Suites

LOTTE HOTEL HANOI's 147m<sup>2</sup> Premier Suite offers abundant space to work or relax with top of the range facilities. This spacious suite offers phenomenal views of Hanoi, and it is an ideal choice to enjoy a restful experience.

2 suites / 147sqm



## Presidential Suite

This 199m<sup>2</sup> suite with separate bedroom and living room is the very epitome of lavishness. LOTTE HOTEL HANOI's Presidential Suite elevates your experience with a breathtakingly beautiful view of the city and first-class services.

1 suites / 199sqm

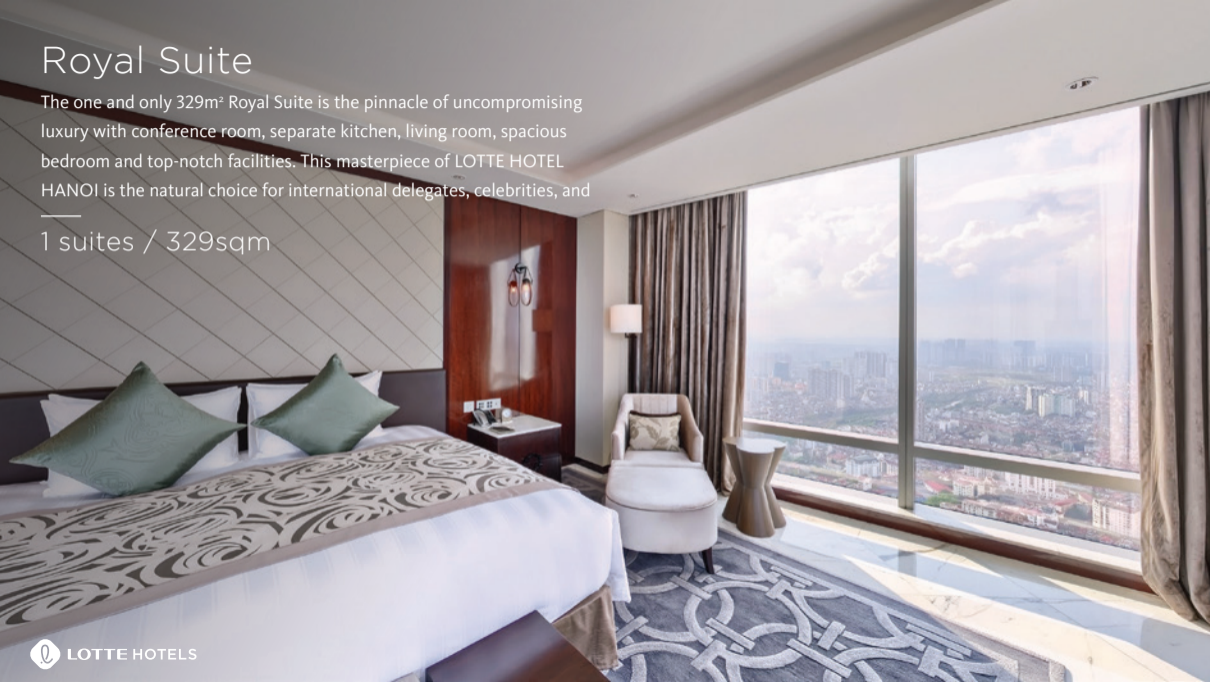


LOTTE HOTELS

# Royal Suite

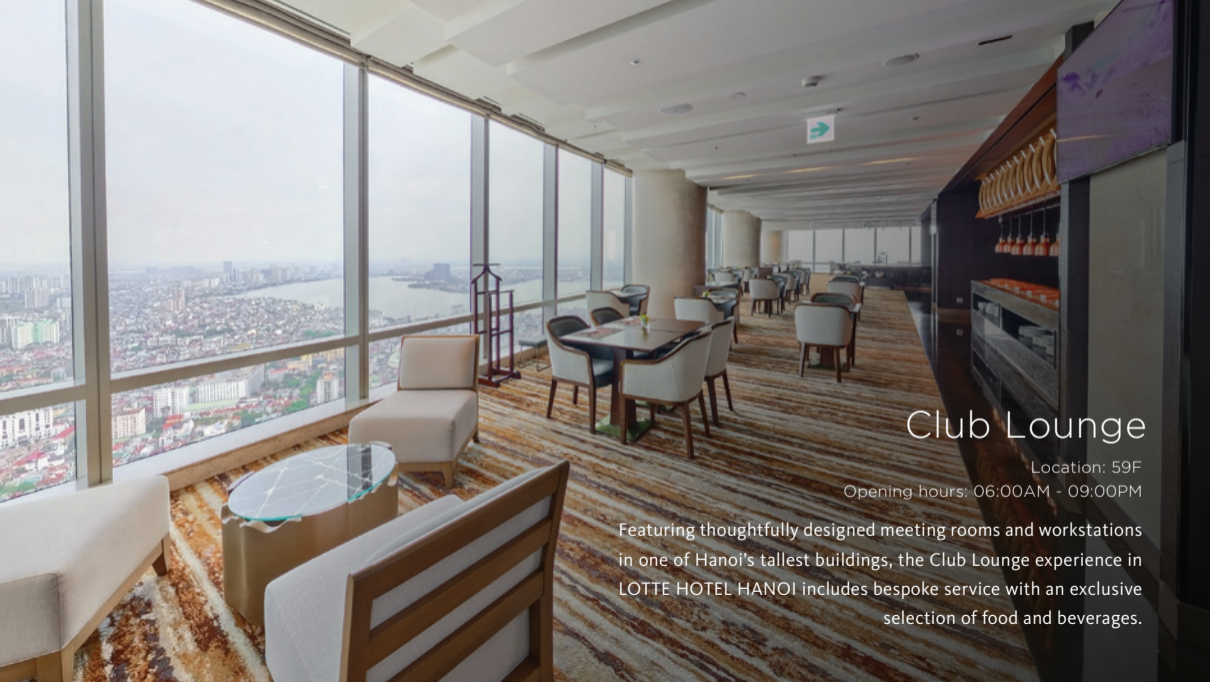
The one and only 329m<sup>2</sup> Royal Suite is the pinnacle of uncompromising luxury with conference room, separate kitchen, living room, spacious bedroom and top-notch facilities. This masterpiece of LOTTE HOTEL HANOI is the natural choice for international delegates, celebrities, and

1 suites / 329sqm





Royal Suite  
Living Room

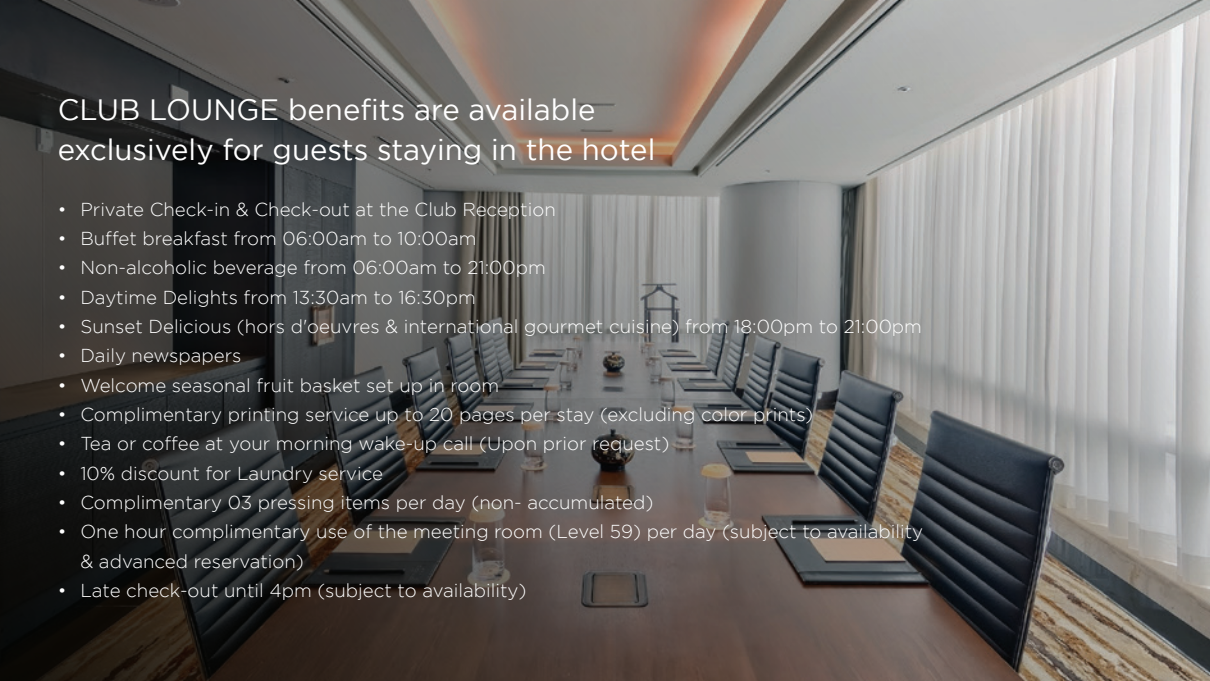


## Club Lounge

Location: 59F

Opening hours: 06:00AM - 09:00PM

Featuring thoughtfully designed meeting rooms and workstations in one of Hanoi's tallest buildings, the Club Lounge experience in LOTTE HOTEL HANOI includes bespoke service with an exclusive selection of food and beverages.



## CLUB LOUNGE benefits are available exclusively for guests staying in the hotel

- Private Check-in & Check-out at the Club Reception
- Buffet breakfast from 06:00am to 10:00am
- Non-alcoholic beverage from 06:00am to 21:00pm
- Daytime Delights from 13:30am to 16:30pm
- Sunset Delicious (hors d'oeuvres & international gourmet cuisine) from 18:00pm to 21:00pm
- Daily newspapers
- Welcome seasonal fruit basket set up in room
- Complimentary printing service up to 20 pages per stay (excluding color prints)
- Tea or coffee at your morning wake-up call (Upon prior request)
- 10% discount for Laundry service
- Complimentary 03 pressing items per day (non- accumulated)
- One hour complimentary use of the meeting room (Level 59) per day (subject to availability & advanced reservation)
- Late check-out until 4pm (subject to availability)



## Exquisite gastronomy journey

Let our extensive collection of 7 restaurants & bars take you on a culinary journey that sets your taste buds tingling!

Featuring distinctive design and personality, each venue shows off the best of both worlds using first-class ingredients from around the globe to give the best narration of each culture and bring the cuisine to life.

Savor the gastronomic experience at LOTTE HOTEL HANOI!

## TOP OF HANOI

---

TOTAL ENTERTAINMENT SKY BAR WITH LIVE MUSIC

LOCATION: ROOFTOP | SEAT: 124

OPENING HOURS:

DAILY FROM 5:00PM TO 12:00AM

Perched on the rooftop of LOTTE HOTEL HANOI, Top of Hanoi's unique location and surrounding glass walls offer mind-blowing 360-degree bird's eye views over Hanoi's cityscapes.

Recognized by Vietnam Travel as one of the top 7 best rooftop bars in Vietnam, the Top of Hanoi has recently been renovated with countless Instagram-worthy corners. The reimagined Total Entertainment Sky Bar intricately utilizes different kinds of lighting, the "fourth dimension" in architecture, from the colorful, futuristic neon lights in the passageway leading to the rooftop bar to the glowing faux brick partitions, to create an ambiance like no other.



# GRILL

FINE DINING + GRILL RESTAURANT

LOCATION: 63-64F | SEAT: 122  
OPENING HOURS: OPEN DAILY:  
BREAKFAST: 6:00AM - 10:00AM  
LUNCH: 11:30AM - 2:30PM  
DINNER: 5:30PM - 9:30PM

Grill63 offers the finest cuts of steak and a premium wine collection to match. With a modern aesthetic, Grill63 is ideal for special occasions or romantic dinners with the stunning panoramic view of Hanoi from the 63<sup>rd</sup> floor.

Join us for a quintessential dining experience!





WHISKY BAR WITH SMOKING AREA  
AND LIVE MUSIC PERFORMANCE

LOCATION: 63-64F | SEAT: 86

OPENING HOURS:

DAILY FROM 5:30PM TO 01:00AM

Located on the 63<sup>rd</sup> & 64<sup>th</sup> floors of LOTTE HOTEL HANOI, Pharaoh's Bar & Upper is truly a hidden gem in the heart of Hanoi, featuring floor-to-ceiling windows with cinematic views of the starry night sky and glittering lights of the city.

Boasting the gorgeous panoramic Hanoi city night views and dazzling live music performances, Pharaoh's Bar & Upper is the ultimate destination for liquor connoisseurs to explore an unparalleled world-class whisky collection and an array of intriguing concoctions produced by some of the most devoted mixologists in Hanoi.





## SIGNATURE CHINESE RESTAURANT

LOCATION: 36-37F | SEAT: 104

OPENING HOURS: OPEN DAILY:

LUNCH: 11:30AM – 2:30PM

DINNER: 5:30PM – 10:00PM

Located on the 36<sup>th</sup> & 37<sup>th</sup> floor of LOTTE HOTEL HANOI, Red River restaurant's spectacular bird's eye views over Hanoi's cityscapes are the perfect backdrop to enjoy our Executive Chef's mouthwatering creations.

Developed from one of the most traditional and oldest gastronomy in the world, contemporary Chinese cuisine is not only imbued with the Asian quintessence, but it is also a perfect blend of ingenious ingredients with sophisticated recipes, creating a delightful harmony of food and culture.





DIM SUM CASUAL

LOCATION: 36F | SEAT: 86

OPENING HOURS:

DAILY FROM 11:30AM TO 10:00PM

Tim Ho Wan, the Michelin-starred dim sum house in Hong Kong has made its mark in the capital city of Vietnam with numerous mouthwatering freshly made dishes.

Drop in to enjoy the signature Baked Bun with BBQ Pork and Prawn dumpling on the 36<sup>th</sup> floor of LOTTE HOTEL HANOI.



# THE LOUNGE sky

LOBBY LOUNGE

LOCATION: 38F | SEAT: 73

OPENING HOURS:

DAILY FROM 8:00AM TO 10:00PM

The Lounge Sky is an intimate place with outstanding views.

Indulge in the signature menus and an intriguing selection of cocktails to make your night in Hanoi a memorable one.



# DELICA-HANS

BY LOTTE HOTELS

LUXURY BOUTIQUE PASTRY SHOP

LOCATION: C09-C10, 1F DEPARTMENT STORE  
OPENING HOURS:  
DAILY FROM 9:30AM TO 10:00PM

Delica-Hans captivates with its refined look and exceptional array of must-try specialties! As a luxury boutique pastry shop within a renowned 5-star hotel, Delica-Hans showcases a curated selection of authentic Korean flavors.





## Rendezvous destination

At LOTTE HOTEL HANOI, Meetings & Conventions are an artful blend of sophistication, dedication and absolute competence.

Our 10 stylish function rooms are designed to accommodate from intimate events to a maximum of 1,200 guests, with the sole focus on what matters most – the success of your event.

With state-of-the-art sound and lighting systems, diverse banquet menus, and professional services, the team of convention specialists at LOTTE HOTEL HANOI will bring you and your guests an unforgettable experience.



Charlotte Room



Pre-function Foyer



Crystal Ballroom Grand



Emerald Ballroom



## FLOOR/ TẦNG

## DIMENSION / KÍCH THƯỚC

## CAPACITY / SỨC CHỨA

L x W  
(m)H  
(m)Area  
(m<sup>2</sup>)

Theater

Classroom

U-shaped

Hollow  
SquareBanquet  
(Round of 10)Cocktail  
receptionExhibition  
BoothsBoard  
room

## TABLE SETTINGS

|                               | FLOOR/ TẦNG | L x W (m)   | H (m) | Area (m <sup>2</sup> ) | Theater | Classroom | U-shaped | Hollow Square | Banquet (Round of 10) | Cocktail reception | Exhibition Booths | Board room |
|-------------------------------|-------------|-------------|-------|------------------------|---------|-----------|----------|---------------|-----------------------|--------------------|-------------------|------------|
| <b>CRYSTAL GRAND BALLROOM</b> | 6           | 38 x 20     | 6.0   | 760                    | 1,000   | 600       | 500      | 550           | 600                   | 1,000              | 60                | -          |
| Crystal Grand Ballroom A      | 6           | 11.5 x 20   | 6.0   | 230                    | 260     | 144       | 110      | 170           | 140                   | 260                | 18                | -          |
| Crystal Grand Ballroom B      | 6           | 15 x 20     | 6.0   | 300                    | 320     | 180       | 150      | 220           | 180                   | 320                | 25                | -          |
| Crystal Grand Ballroom C      | 6           | 11.5 x 20   | 6.0   | 230                    | 260     | 144       | 110      | 170           | 140                   | 260                | 18                | -          |
| Pre - function foyer          | 6           | 38 x 7.5    | 4.0   | 285                    | -       | -         | -        | -             | 200                   | 450                | 20                | -          |
| <b>EMERALD ROOM</b>           | 6           | 17.5 x 16.5 | 3.1   | 288                    | 250     | 130       | 144      | 192           | 150                   | 250                | 20                | -          |
| Pre - function foyer          | 6           | 10 x 6.5    | 3.1   | 65                     | -       | -         | -        | -             | 30                    | 50                 | 4                 | -          |
| <b>CHARLOTTE ROOM</b>         | 6           | 19 x 7      | 3.1   | 133                    | 150     | 81        | 60       | 70            | 80                    | 150                | 10                | -          |
| Charlotte A                   | 6           | 8 x 7       | 3.1   | 56                     | 50      | 30        | 22       | 28            | 30                    | 50                 | 4                 | -          |
| Charlotte B                   | 6           | 11 x 7      | 3.1   | 77                     | 100     | 40        | 30       | 40            | 50                    | 100                | 6                 | -          |
| Pre - function foyer          | 6           | 30 x 7      | 3.1   | 210                    | -       | -         | -        | -             | 60                    | 150                | 10                | -          |
| <b>TOPAZ ROOM</b>             | 6           | 5 x 4.5     | 3.1   |                        | -       | -         | -        | -             | -                     | -                  | -                 | -          |
| <b>CLUB LOUNGE</b>            | 59          |             |       |                        |         |           |          |               |                       |                    |                   |            |
| Conference I                  | 59          | 5 x 4       | 3.0   | 20                     | -       | -         | -        | -             | -                     | -                  | -                 | 8          |
| Conference II                 | 59          | 9 x 5       | 3.0   | 45                     | -       | -         | -        | -             | -                     | -                  | -                 | 20         |
| Conference III                | 59          | 9 x 5       | 3.0   | 45                     | -       | -         | -        | -             | -                     | -                  | -                 | 20         |
| Conference IV                 | 6           | 9 x 6       | 3.3   | 54                     | 48      | 18        | 18       | 24            | 30                    | 50                 | -                 | 18         |
| Pre-function foyer            | 6           | -           | 2.8   |                        | -       | -         | -        | -             | -                     | -                  | -                 | -          |

# FLOOR PLANS

Crystal Grand Ballroom



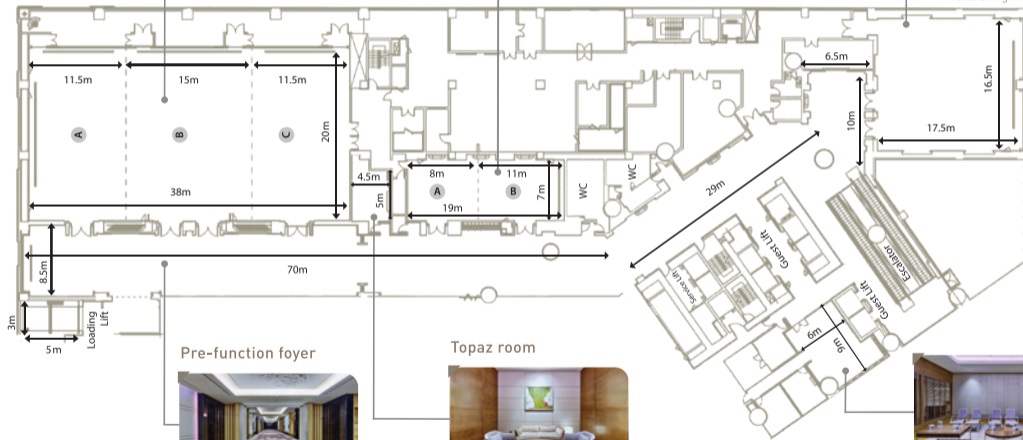
Charlotte room



Emerald room



\*Natural light available



Pre-function foyer



Topaz room



Conference room IV

# ORGANIZED EVENTS

---



# SPA & FITNESS CENTER



## An Ultimate Wellness Center

The 1,680 sqm Fitness Center with a variety of advanced cardio machines and weight-training equipment was created to allow our guests to maintain their exercise routine while they travel.

Take your pick from a spacious yoga room, an indoor golf driving range, an outdoor pool, a gym, a sauna, a basketball court, and a walking trail to maintain your momentum and feel revitalized during your stay.



+ 1,200 sqm  
+ 6 treatment rooms, 1 executive suite, luxurious indoor pool.



LOCATION: 34-35F  
OPENING HOURS:  
10:00AM TO 10:00PM

Covering an area of 1,200 sqm, LOTTE HOTEL HANOI's evian®SPA consists of six treatment rooms, one executive suite room, an exclusive luxurious pool only for spa customers as well as manicure & pedicure services. Rebalance your body and mind with one of the most sophisticated treatment techniques in the Indochina region in the tranquil surroundings inspired by pristine Alpine nature.



As part of evian®SPA Hanoi, the luxurious four-season indoor pool and the private Jacuzzi are exclusive for LOTTE HOTEL HANOI's spa customers. Dive right in to enjoy a truly relaxing experience and recharge yourself.

The Fitness Center is equipped with the latest facilities and makes your safety its top priority. Relish in both tranquility and vitality of Hanoi with the Technogym equipment from Italy and enjoy the highest level of relaxation.

LOCATION: 7F  
OPENING HOURS:  
DAILY FROM 6:00AM TO 10:00PM  
(GYM OPEN 24/7)

1,680 sqm  
Gym center, a spacious yoga room, an indoor golf driving range and spacious sauna. A large outdoor pool and barbecue zone for family guests, a basketball court and walking trail for outdoor recreation.

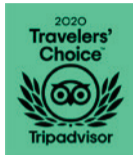
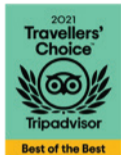




Dive into the clear water, enjoy the fresh air, feel the warm sunshine and hear the vibe of Hanoi closer than ever at the outdoor swimming pool on 7th floor of LOTTE HOTEL HANOI. Now you will love swimming even more.

LOCATION: 7F  
OPENING HOURS: DAILY  
FROM 6:00AM TO 10:00PM

# AWARD & RECOGNITION



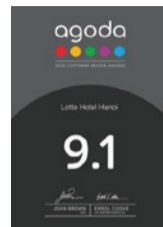
2022 TRIPADVISOR TRAVELER'S CHOICE - BEST OF THE BEST AWARD WINNER

2021 TRIPADVISOR TRAVELER'S CHOICE - BEST OF THE BEST AWARD WINNER

2020 TRIPADVISOR TRAVELERS' CHOICE WINNER FOR TOP 10% OF HOTELS  
WORLDWIDE

2019 TRIPADVISOR CERTIFICATE OF EXCELLENCE

2018 TRIPADVISOR CERTIFICATE OF EXCELLENCE



2025 GLOBAL PARTNER OF FORBES TRAVEL GUIDE

2024 EXPEDIA TRAVELER'S CHOICE AWARD

2023 EXPEDIA TRAVELER'S CHOICE AWARD

2023 BOOKING.COM TRAVELER REVIEW AWARDS - 9/10

2023 AGODA CUSTOMER REVIEW AWARD - 9,2/10

2021 BOOKING.COM TRAVELER REVIEW AWARDS - 9,1/10

2020 AGODA CUSTOMER REVIEW AWARD - 9,1/10



**LOTTE HOTELS**

LOTTE HOTEL HANOI

No. 54 Lieu Giai, Ba Dinh, Hanoi, Vietnam

T +84.24.3333.1000 | E [hotelhanoi@lotte.net](mailto:hotelhanoi@lotte.net) | W [www.lottehotel.com/hanoi](http://www.lottehotel.com/hanoi)

Facebook: [www.fb.com/LOTTEHOTELHANOI](http://www.fb.com/LOTTEHOTELHANOI)

Instagram: [www.instagram.com/lottehotel\\_hanoi](http://www.instagram.com/lottehotel_hanoi)

THANK YOU!

